

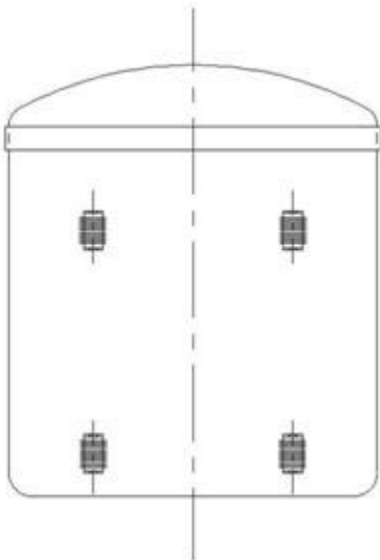
# Bhagawati Gas Limited

## FRP/GRP Chemical Tank

---



### Flat Bottom Tanks

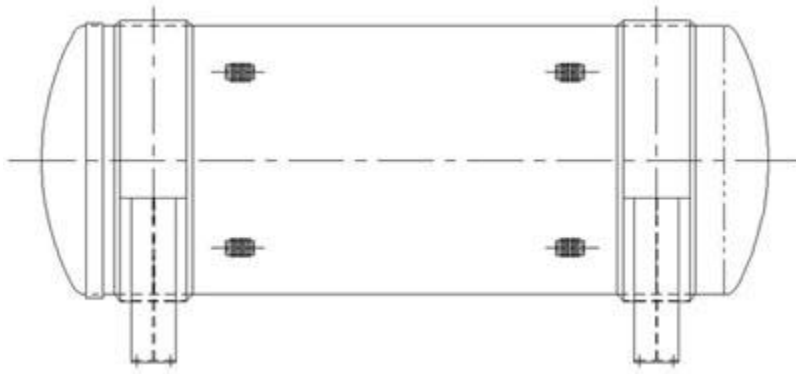


Flat Bottom tanks are the most common used tanks in the industry. All Flat Bottoms are designed in accordance with ASTM D-3299 or D-4097 standards. They are the most cost effective way to store product. The tank flat bottom requires a flat surface to give full support.

### Horizontal Tanks

**A27B, Sector-16, NOIDA (U.P.) 201301, INDIA**  
**Phone: +91-120-4749901, 9891388782**

# Bhagawati Gas Limited



Horizontal tanks are a great choice when floor space is not an issue and head room is at a minimum. The Horizontal tank ends are ASME Flanged & Dished for added strength and capacity. Horizontal tanks come standard with a minimum of two primed carbon steel support saddles which provide a standard 12" under clearance from the tank bottom to the bottom of the saddles.

Support saddles can be provided as painted carbon steel, Fiberglass Reinforced Plastic (FRP), T-304 or T-316 stainless steel, at additional cost.

## Advantages:

- Better corrosion resistant
- High mechanical strength at low specific gravity
- Easy maintenance
- Good insulating quality
- Light weight
- Easy installation
- Low repair down time
- Good resistance of weathering
- Good chemical resistance
- Economical compared to MS/SS

## Capacities:

- 50 Liters up to 50,000 liters

## Quality:

We are following standard manufacturing practices for the manufacturing of the FRP Chemical Storage tanks. The codes we are following for these FRP Chemical Storage Tanks are:

- BS 4994-1992
- ASTM D-4097-88 For Contact Moulding Tanks

**A27B, Sector-16, NOIDA (U.P.) 201301, INDIA**  
**Phone: +91-120-4749901, 9891388782**

# Bhagawati Gas Limited

- ASTM D -3299-88- For Filament Wound FRP Tanks
- ASME/ANSI/RTP 1 -1995- For reinforced Thermoset Plastic Tanks

## Industries Served

- Automotive
  - Municipalities - Water & Waste Water Treatment
  - Food & Beverage
  - Pharmaceutical
  - Chemical Processing
  - Metal Finishing
  - Steel
  - Pulp & Paper
  - Agricultural
-